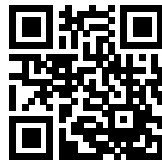


Multi-stage EMI Filter



- Rated currents from 6 to 10 A
- Surge pulse protection up to 2 kV
- Solder or screw connection



Performance indicators

Attenuation performance



Rated current [A]



Approvals & Compliances



Features and Benefits

- FN352Z series is developed to meet high filter attenuation requirements by using multi-stage filter design
- Additional high surge pulse voltage protection up to 2 kV is integrated to protect sensitive equipment
- Choosing FN352Z product line brings you the rapid availability of a standard filter associated with the necessary safety acceptances
- Standard filters are a practical solution helping you to pass EMI system approval in a short time
- Exceptional conducted attenuation performance, based on multi-stage design and chokes with high saturation resistance and excellent thermal behavior
- Various connection options
- Custom-specific versions on request

Technical Specifications

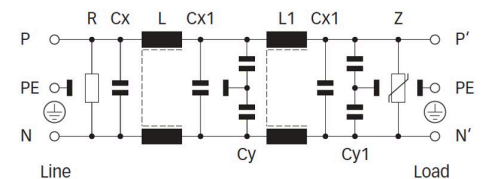
Maximum continuous operating voltage	250 VAC, 50/60 Hz
Operating frequency	DC to 400 Hz
Surge pulse protection	2 kV IEC 61000-4-5
Rated currents	6 to 10 A @ 40°C max.
High potential test voltage	P → PE 2000 VAC for 2 sec P → N 350 VDC for 2 sec
Energy absorption	40J
Temperature range (operation and storage)	-25°C to +85°C (25/85/21)
Flammability corresponding to	UL 94 V-2 or better
Design corresponding to	UL 1283, CSA 22.2 No. 8 1986, IEC/EN 60939

Typical Applications

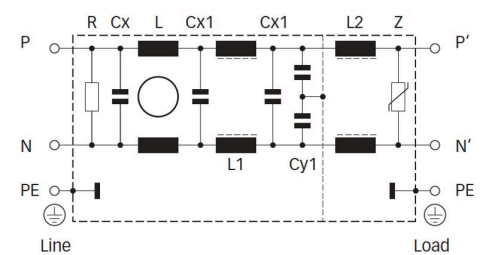
- Facility management
- Industrial
- Telecommunication
- Data processing
- Electrical and electronic equipment

Typical electrical schematic

6 A types



10 A types



Filter Selection Table

Filter	Rated current @ 40°C (25°C) [A]	Leakage current* @ 230 VAC/50 Hz [µA]	Inductance			Capacitance				Resistance R [MΩ]	Energy absorption [J]	Input/Output connections	Weight [g]
			L [mH]	L1 [mH]	L2 [mH]	Cx [nF]	Cx1 [nF]	Cy [nF]	Cy1 [nF]				
FN352Z-6-06	6 (7.2)	420	3	3		470	220	3.3	1.5	0.47	40	-06	575
FN352Z-10-29	10 (12)	1300	5	0.06	0.003	220	220	15	15	0.47	40	-29	1320

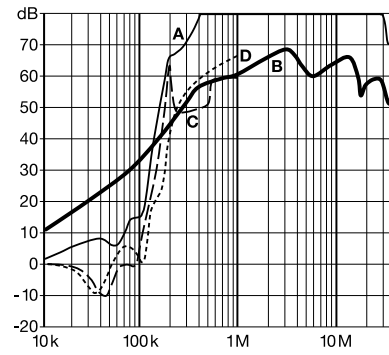
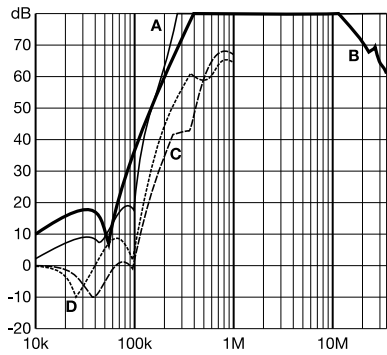
* Maximum leakage under normal operating conditions.
Note: if the neutral line is interrupted, worst case leakage could reach twice this level.

Typical Filter Attenuation

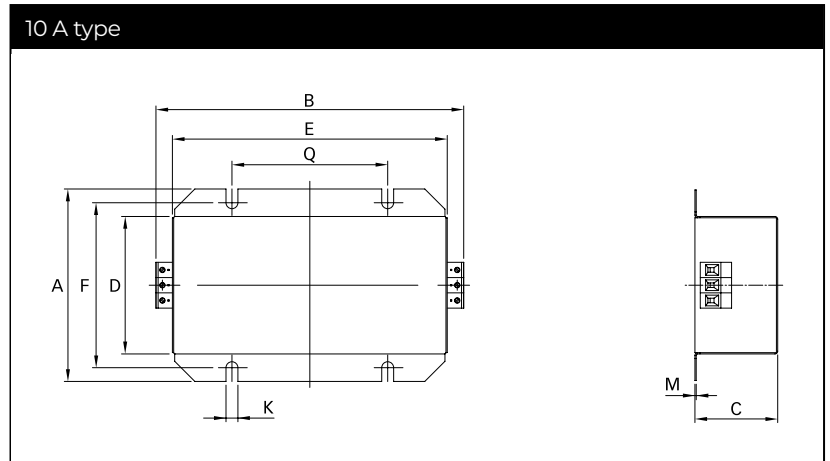
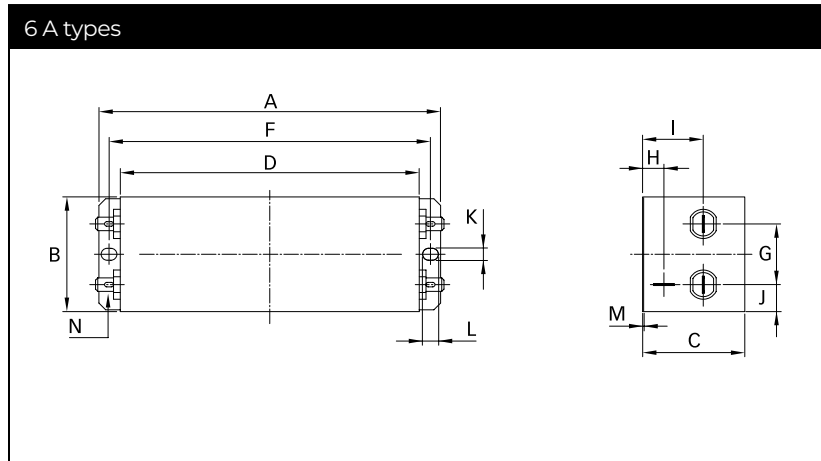
Per CISPR 17; A=50 Ω/50 Ω sym; B=50 Ω/50 Ω asym; C=0.1 Ω/100 Ω sym; D=100 Ω/0.1 Ω sym

6 A types

10 A types



Mechanical Data

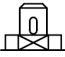



Dimensions

	6 A	10 A	Tolerances
A	152	126	±0.5
B	51	172.3	±0.5
C	45	55.25	±0.5
D	133	100.5	±0.5
E		150.5	±0.5
F	143	112	±0.5
G	27		±0.5
H	9.5		±0.5
I	27		±0.5
J	12		±0.5
K	5.3	6.4	
L	7		
M	0.5		
N	6.3 x 0.8		
Q		85	±0.1

All dimensions in mm; 1 inch = 25.4 mm
 Tolerances according: ISO 2768-m/EN 22768-m

Filter Input/Output Connector Cross Sections

	-06	-29
Solid wire	 n/a	 6 mm ²
Flex wire	n/a	4 mm ²
AWG type wire	n/a	AWG 10
Recommended torque	n/a	0.6-0.8 Nm

Please visit www.schaffner.com to find more details on filter connectors.

Headquarters, Global Innovation and Development

Switzerland

Schaffner Group

Industrie Nord
Nordstrasse 11e
4542
Luterbach
+41 32 681 66 26
info@schaffner.com

Sales and Application Centers

China

Schaffner EMC Ltd. Shanghai

T20-3 C No 565 Chuangye Road Pudong district
201201
Shanghai
+86 2138139500
cschina@schaffner.com

Sweden

Schaffner EMC AB

Östermalmstrorg 1
114 42
Stockholm
+46 8 5050 2425
swedensales@schaffner.com

Switzerland

Schaffner EMV AG

Industrie Nord
Nordstrasse 11e
4542
Luterbach
+41 32 681 66 26
switzerlandsales@schaffner.com

Taiwan

Schaffner EMV Ltd.

U-Town
20 Floor-2 No 97 Section 1 XinTai 5th Road
XiZhi District
22175
New Taipei City
+886 226975500
taiwansales@schaffner.com

Thailand

Schaffner EMC Co. Ltd.

Sathorn Square Tower
Room 3780 37FL 98 North-Sathorn Rd Silom
Bangrak
10500
Bangkok
+66 621056397
thailandsales@schaffner.com

United Kingdom

Schaffner Ltd.

Suite 1 Oakmede Place
Terrace Road
RG42 4JF
Binfield
+44 118 9770070
uksales@schaffner.com

United States

Schaffner EMC Inc.

52 Mayfield Avenue
Edison, New Jersey
+1 732 225 9533
usasales@schaffner.com

Finland

Schaffner Oy

Sauvonrinne 19 H
8500
Lohja
+358 50 468 7284
finlandsales@schaffner.com

France

Schaffner EMC S.A.S.

16-20 Rue Louis Rameau
95875
Bezons
+33 1 34 34 30 60
francesales@schaffner.com

Germany

Schaffner Deutschland GmbH

Schoemperlenstrasse 12B
76185
Karlsruhe
+49 721 56910
germanysales@schaffner.com

India

Schaffner India Pvt. Ltd

Regus World Trade Centre
WTC 22nd Floor Unit No 2238 Brigade
Gateway Campus 26/1 Dr. Rajkumar Road
Mallechwaram (W)
560055
Bangalore
+91 8067935355
indiasales@schaffner.com

Italy

Schaffner EMC S.r.l.

Via Ticino, 30
20900
Monza (MB)
+39 039 21 41 070
italysales@schaffner.com

Japan

Schaffner EMC K.K.

ISM Sangenjaya 7F
1-32-12 Kamiyama Setagaya-ku
154-0011
Tokyo
+81 3 5712 3650
japansales@schaffner.com

Singapore

Schaffner EMC Pte Ltd.

Blk 3015A Ubi Road 1 #05-09 Kampong Ubi
Industrial Estate
408705
Singapore
+65 63773283
singaporesales@schaffner.com

To find your local partner within Schaffner's global network schaffner.com

© 2023 Schaffner Group

The content of this document has been carefully checked and understood. However, neither Schaffner nor its subsidiaries assume any liability whatsoever for any errors or inaccuracies of this document and the consequences thereof. Published specifications are subject to change without notice. Product suitability for any area of application must ultimately be determined by the customer. In all cases, products must never be operated outside their published specifications. Schaffner does not guarantee the availability of all published products. This disclaimer shall be governed by substantive Swiss law and resulting disputes shall be settled by the courts at the place of business of Schaffner Holding AG. Latest publications and a complete disclaimer can be downloaded from the Schaffner website. All trademarks recognized.